



## CAPE Online World Language Institute

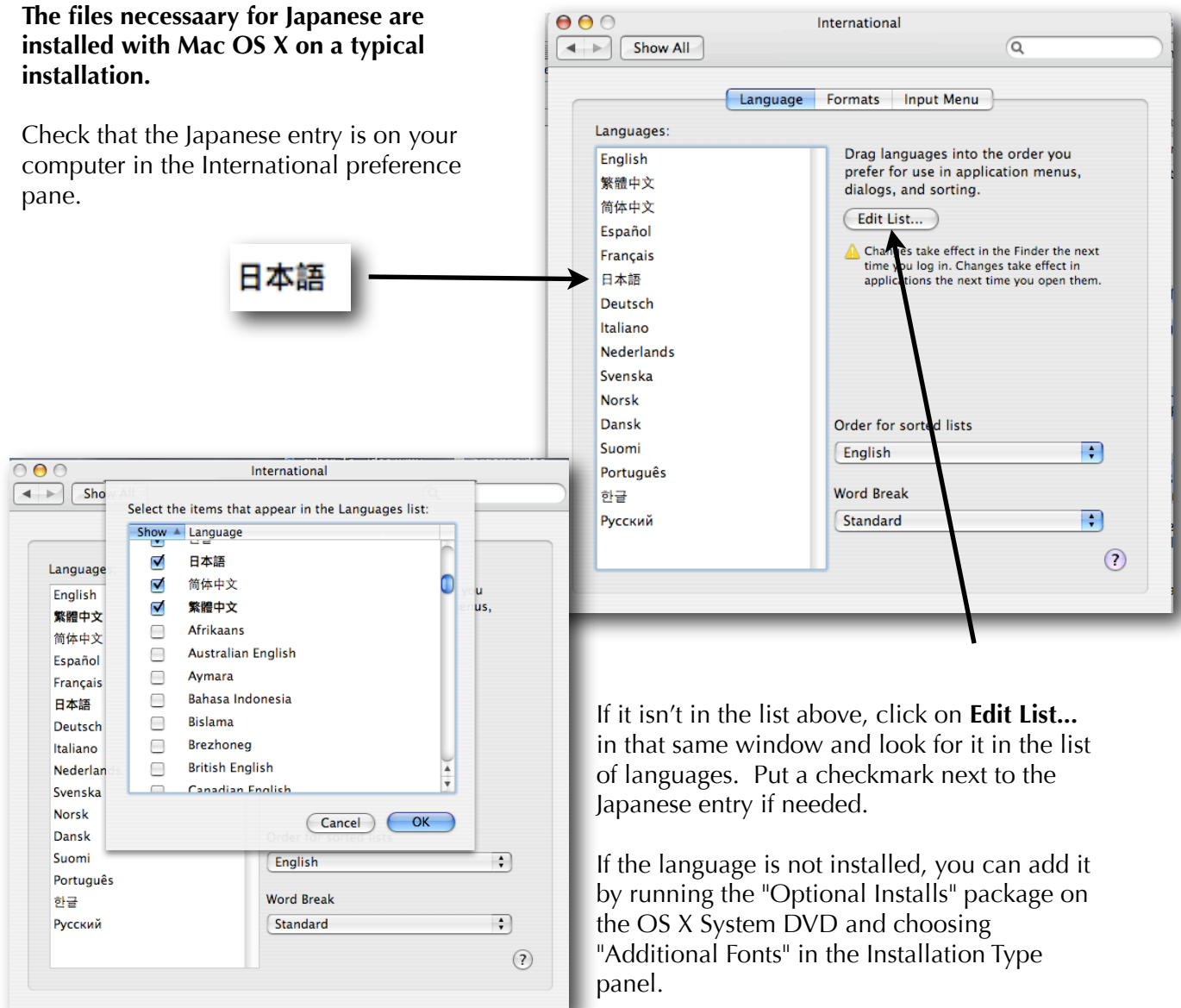
### Installing Japanese Language Support - Mac OS X 10.4 (Tiger)

These instructions will help someone using Mac OS X Tiger add Japanese as an input language for their computer.

Under the Language tab in **System Preferences... International**, you will find a list of languages supported by OS X 10.4. The language at the top of the list is the default system language, used by the Finder and applications whenever possible.

**The files necessary for Japanese are installed with Mac OS X on a typical installation.**

Check that the Japanese entry is on your computer in the International preference pane.

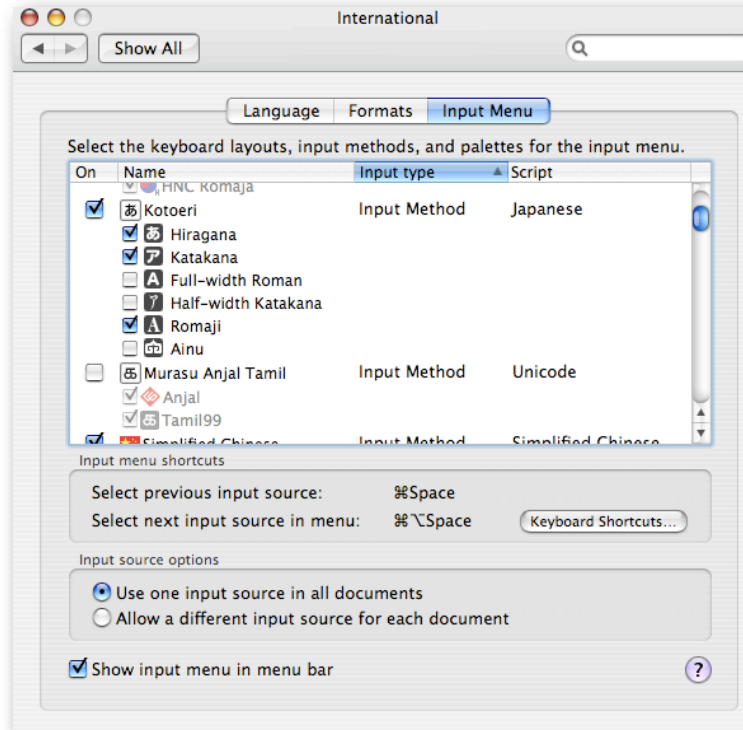


If it isn't in the list above, click on **Edit List...** in that same window and look for it in the list of languages. Put a checkmark next to the Japanese entry if needed.

If the language is not installed, you can add it by running the "Optional Installs" package on the OS X System DVD and choosing "Additional Fonts" in the Installation Type panel.

## Input Menu

Under the **Input Menu** tab in System Preferences... International, you will find check boxes that activate the components of the **Japanese** input method. Make sure that the **"Show input menu in menu bar"** box is also checked. You can also check the Character Palette box to make it appear.



The Japanese input methods and plug-ins you choose will appear right away in the Input menu itself, which appears on the right side of the Menu bar.

To activate a keyboard or input method, choose it from the menu. Its icon will appear in the Menu bar and it will have a check mark beside it in the menu.

