



CENTER FOR ADVANCING PARTNERSHIPS IN EDUCATION

CAPE Online World Language Institute

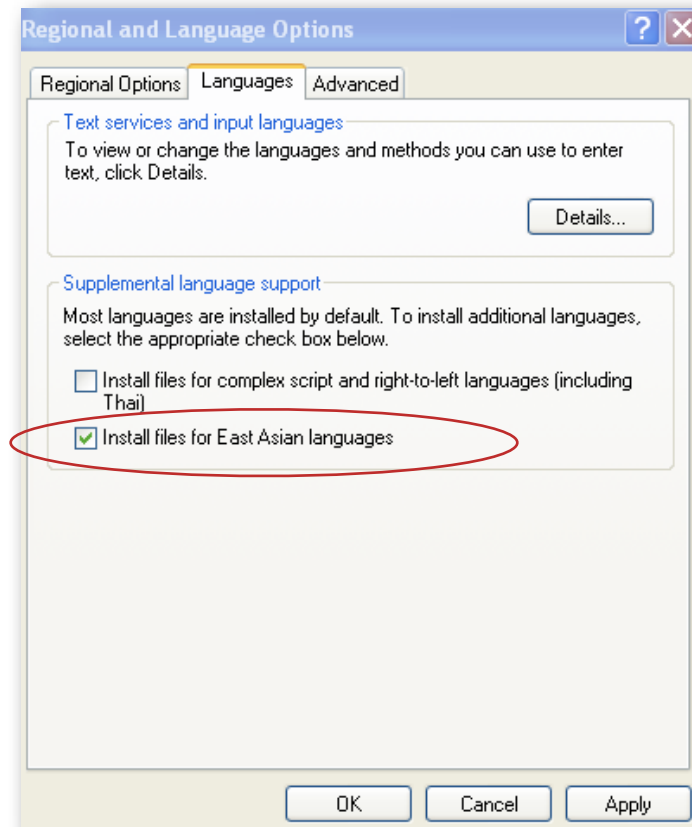
Installing Chinese Language Support in Windows XP

These instructions will help someone install Chinese language support and add Simplified and Traditional Chinese as input languages for their computer. The screenshots were taken from Windows XP Professional.

You will need your Windows XP Installation CD in order to install the necessary Chinese files.

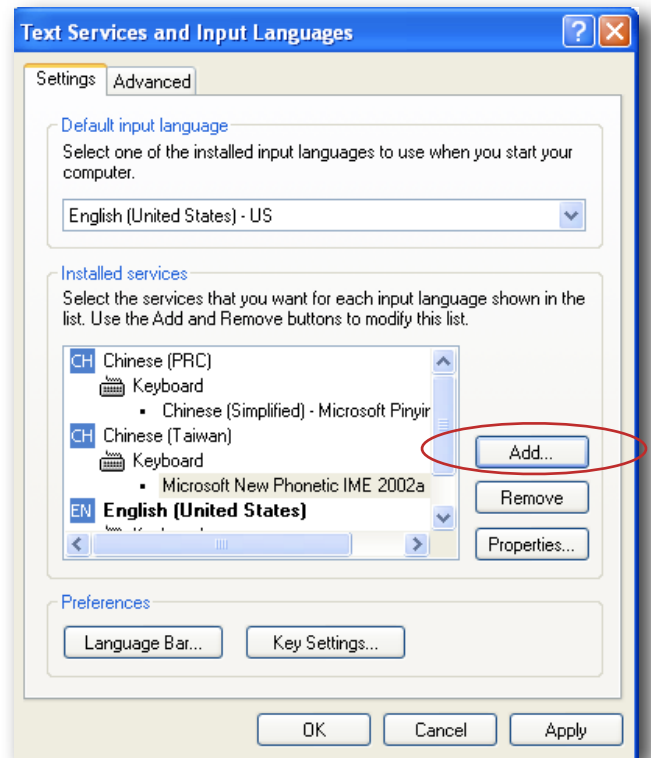
1. Install files for East Asian Languages

- From the Start Menu, open the Control Panel and select **Regional and Language Options**.
- Choose the **Languages** Tab and check the box for **Install files for East Asian languages**.
- Then click **Apply** and wait while the files install. It will take approximately 200MB of disk space.
- You will be prompted to restart your computer. Click **Restart** and return to the Regional and Language Options control panel.

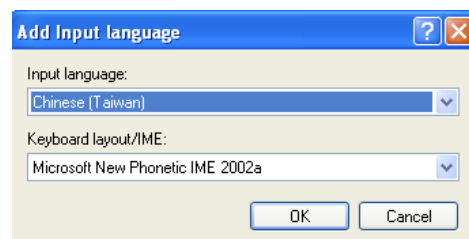
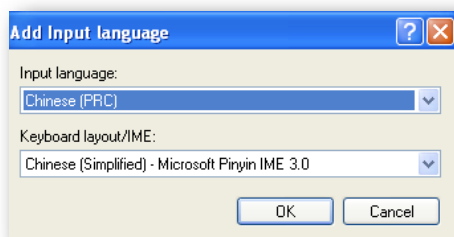


2. Add Simplified (PRC) and Traditional Chinese (Taiwan) as Input Languages to your computer.

- Click on the **Details** button in order to open the **Text Services and Input Languages** window.
- On the **Settings** tab, click on the **Add...** button.



- In the **Add Input language** dialog box, select **Chinese (PRC)** and the **Chinese (Simplified) - Microsoft Pinyin IME 3.0** keyboard. This keyboard should be selected automatically when choosing Chinese (PRC).
- Click **Add...** one more time and select **Chinese (Taiwan)** and **Microsoft New Phonetic IME 2002a** keyboard. This keyboard should be selected automatically when choosing Chinese (Taiwan).
- Then click **OK** and close the box.




4. Key Settings (Optional)

- You may choose the **Key Settings...** button which allows you to specify shortcut keys for switching between English and Japanese.
- As a default, the key combination is **ALT + Shift**. If you have more than two languages installed, you may want to specify key strokes for switching to particular languages.

5. You may now close the Text Services and language window.

6. Language Bar

- You should now notice an **EN** in your taskbar. 
- When you click and hold this icon, the input languages you have specified should be displayed. **CH** for Chinese Simplified (**PRC**) and for Traditional **Chinese (Taiwan)** should appear here.
- You may switch between languages by clicking on the language in this list. You may also use **ALT + Shift** or the keystrokes you specified earlier in step 4.

